

6332A-4 KITCHEN MIXER WITH PULLOUT SPRAY
BEFORE YOU BEGIN
<p>All information is based on the latest product information available at the time of publication. Kohler Co. reserves the right to make changes in product characteristics, packaging, or availability at any time without notice.</p> <p>Please leave these instructions for the consumer. They contain important information.</p> <p>NOTES:</p> <ol style="list-style-type: none">1. Flush the water supply pipes thoroughly to remove debris.2. An in line water filter must be used with this product.3. Inspect the supply pipes for damage and leakage. Replace and maintain as necessary4. Observe local plumbing codes.5. If possible, install this faucet before installing the sink.6. Recommended working pressure: 1 to 5 bar. If it exceeds 5 bar, a pressure reducer is needed. The highest water and environment temperature is 60°C.7. All installations should comply with the relevant requirements of AS/NZS 3500 and AS/NZS 6400.
ROUGH-IN DIMENSIONS
<p>Lift the handle gently. Turn clockwise for hot water, turn counter-clockwise for cold water.</p>
ROUGH-IN DIMENSIONS

INSTALLATION

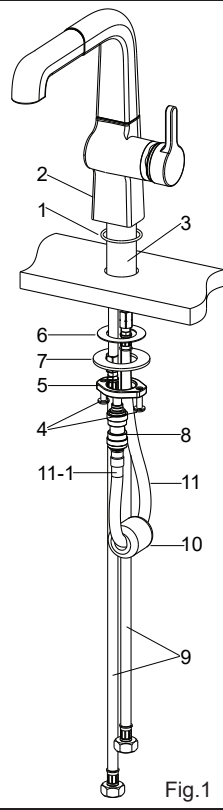
How to Install the Faucet

Slide the o-ring(1) into the groove of the body(2). Insert the body kit with the hoses into the mounting hole of sink until they contact the deck.

Adjust the position of the faucet as Fig.2 shown. Screw two screws(4) into the threaded ring(5). From underside of the sink, install the washer(6), the metal washer(7) and threaded ring with two screws onto the shank(3). Tighten two screws to secure faucet to sink.

Attach the hoses(9) to water supplies. The hose with blue round is for cold water, the hose with red round is for hot water.

Slide the weight(10) onto the hose assembly(11). Adjust weight so that the distance is right from the bottom of the faucet to the weight. Insert another end(11-1) of the hose assembly into the connector(8).

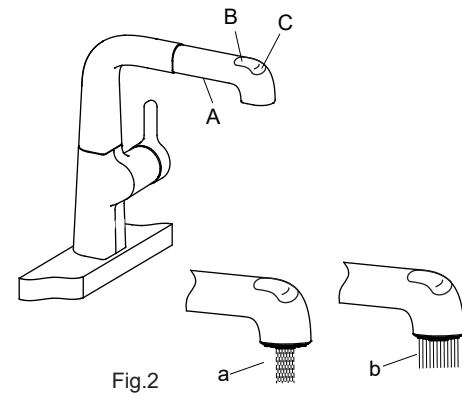


How to Use Spray

Open the handle, if you want to use the spray by hand, take the spray and pull out the hose.

Press the button(A) as shown for the water close. Press the button (B), (C) as shown for two different forms of water flow, as figure(a), (b) shown.

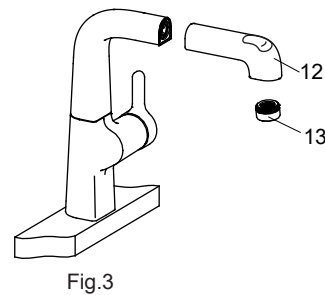
NOTE: Please pull it gently and do not draw out the spray hose too long, or you may damage the hose and connector.



INSTALLATION CHECKOUT

Ensure that all coupling nuts are tight. Ensure that the lever handle is in the off position. Turn on the main water supply and drain, and check for leaks. Repair as needed.

Remove the aerator(13) and the spray(12). Run hot and cold water for about a minute to remove any debris. Remove any debris from the aerator and the filter washer of the spray. Shut off the faucet. Reinstall the aerator and the spray.

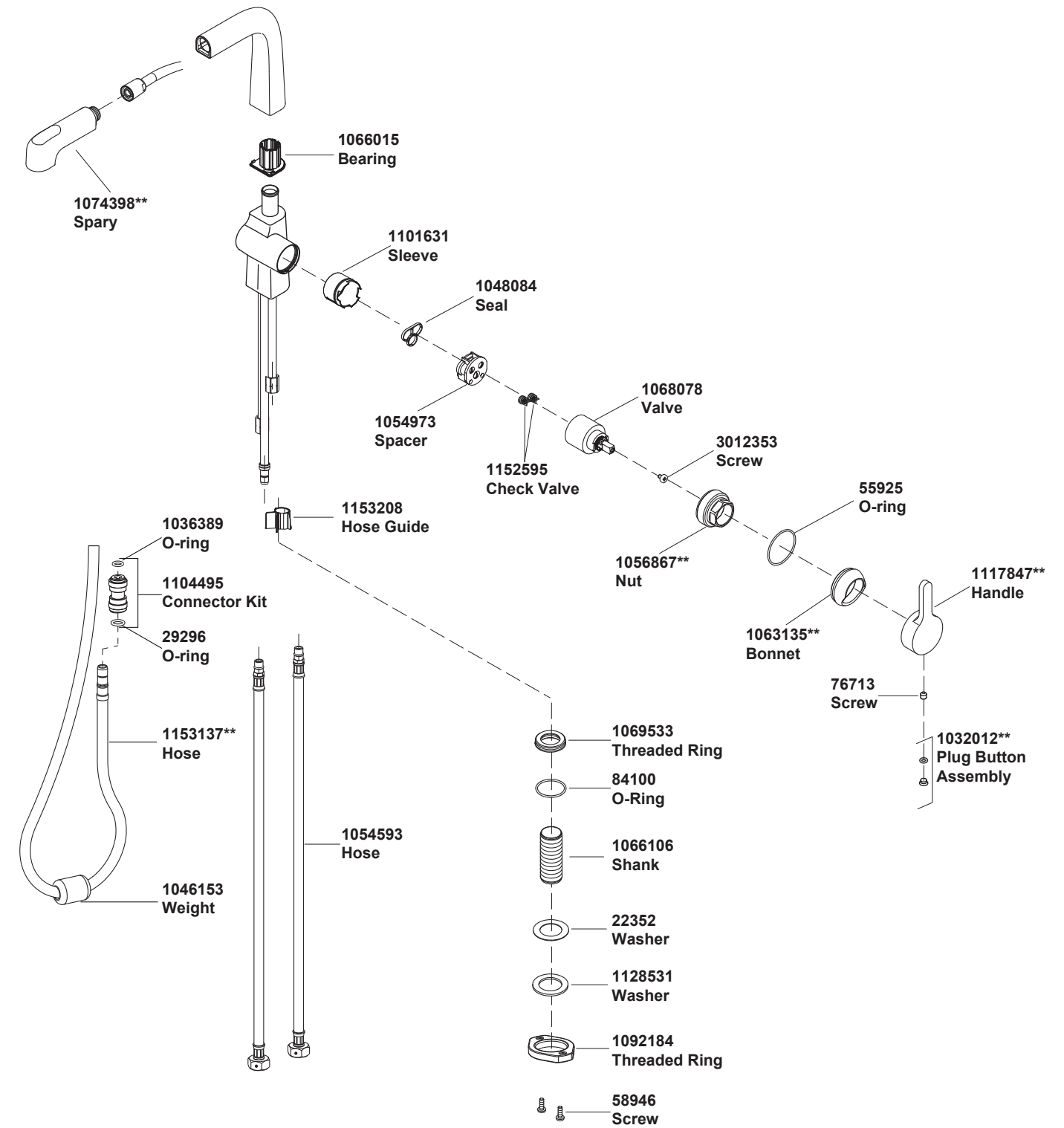


CLEANING INSTRUCTIONS

All Finishes: Clean the finish with mild soap and warm water. Wipe entire surface completely dry with clean soft cloth. Many cleaners may contain chemicals, such as ammonia, chlorine, toilet cleaner etc. which could adversely affect the finish and are not recommended for cleaning.

Do not use abrasive cleaners or solvents on Kohler faucets and fittings.

6332A-4 KITCHEN MIXER WITH PULLOUT SPRAY



**Color code must be specified when ordering